

## Welcome



**John Youle**  
Construction  
Director  
Beard

We have had a very positive reception to our expansion into the Guildford area and we are pleased with our progress, meeting the goals we set ourselves to consolidate and grow the team and to acquire permanent offices.

What is particularly satisfying is that we are already seeing repeat business – a sure sign that we are getting something right! New projects at Eton College and St Philomena's Senior School in Carshalton are two examples.

### Quality Property Services

As well as a wide range of project work we are also extending our successful Property Services capability into the Guildford area. We are seeing growth in demand across the business for repair, maintenance and minor works.

This is a natural extension for our Guildford team and we will be able to provide estates and building managers with a range of high quality services covering planned maintenance and repairs to small scale alterations and improvements as well as advise on prioritising works.

I look forward to meeting many of you during the coming year. If we can provide information or advice about how we can add value to your plans please don't hesitate to contact the team on our new Guildford number 01483 485180.

*John Youle*

## Team grows into new, permanent offices

Our team is shaping up extremely well and recently moved into newly acquired local offices at Stonemasons Court in Brookwood, just four miles North of Guildford centre. This is proving an ideal location from which to develop the business and to support customers across Surrey, Sussex, Berkshire and Hampshire.

The team already has excellent local knowledge and we are starting to establish our name within the local property and construction sector – strengthening relationships with partners, suppliers and our local customers.

Three new appointments add further strength and experience to the team.

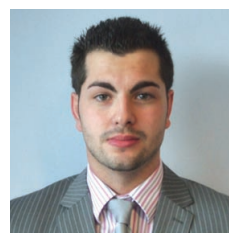
We are delighted to welcome **Sarah Coffey**, who joins as Office Manager. She'll be helping to keep everyone in order and streamlining office processes to ensure a prompt response to enquiries.



*Sarah Coffey*

She is joined by **Chris Greaves**, an experienced Estimator who brings additional weight to the team – enabling us to add greater precision to our estimating procedures and a more rapid turnaround for customers.

**Luke Brown** is the most recent member of the team and he will be taking on the important QS function for the Guildford office.



*Luke Brown*



*Above: Stonemasons Court, Brookwood, Guildford*



### Early involvement delivers

Involving us at the earliest stages of your project will maximise the efficiency of your build. Issues can be fully examined, cost predictability is improved, and it gives time to understand your wider business objectives properly, especially with occupied sites or where buildings are being taken out of circulation. It means everyone knows what to expect, and nothing is left to chance.



*Peter Aulsberry*

*For more information on the value we can bring to your project contact Peter Aulsberry, Contracts Manager on [peter.aulsberry@beardguildford.co.uk](mailto:peter.aulsberry@beardguildford.co.uk). Alternatively email [enquiries@beardguildford.co.uk](mailto:enquiries@beardguildford.co.uk)*



Farrer House, Eton

## Makeover for boarding accommodation at Eton

The team has started work on a second construction project for Eton College in Berkshire to refurbish and upgrade boarding accommodation in a contract valued at over £700,000.

Due for completion in August 2011, the project incorporates alterations and high quality improvements to some 50 study bedrooms, communal areas and private staff quarters at Farrer House and follows a similar project to upgrade boy's accommodation at Evans's House, which Beard recently completed.

This is a live college environment with an occupied building, presenting a number of challenges for the team. The work is being carried out in seven phases with a number of boys moving into alternative living areas while work progresses. Temporary partitioning from the rest of the building and careful scheduling of noisy construction activities are helping to minimise disruption to the daily life of the boarding house.

*"This is our second refurbishment project at Eton and we are delighted that the college has placed their confidence in us. Our approach to managing projects like this and the strong relationships we build with staff are crucial factors in delivering on expectation. Health and safety is a paramount concern, especially as we also have to deal with asbestos at each phase, and masking construction activity to remain as inconspicuous as possible will be a key goal throughout the project".*

**Peter Aulsberry,**  
Contracts Manager, Beard

## Education keeps the team busy

Remodelling and refurbishment, often involving occupied buildings, is an area where Beard's experience really counts and not surprisingly, given current budget pressures, it is where we see increasing demand.

Education remains by far our busiest sector. In the 21 months we have been up and running, we have worked on nine school projects.

But it is not all Education – we have completed projects for a wide range of clients and under a framework agreement with Aspire Defence we are also involved in a number of MoD projects including a new steel framed maintenance building at Aldershot.

### New leisure centre at Cox Green

Cox Green in Maidenhead has a new £1.3 million leisure centre following a 32 week programme of work. The striking two-storey building with a curving roofline has created important new facilities for the school and local community.



Cox Green

## New dining facilities for St Philomena's School

Beard is in the final phases of a £1.7 million project to improve dining and teaching facilities at St Philomena's Catholic High School in Carshalton.

The ten month project has involved the construction of a brand new kitchen, a dining room extension for another 100 students and on the first floor, three large classrooms and additional office accommodation.

Minimising disruption to the school day has been crucial. Daily interaction with staff to fit noisy construction activities



around the curriculum has been important to keep everything running smoothly, and a sympathetic approach to the school's 18th century buildings has been required.

*"The school is delighted with the new facilities. This is Beard's second project at*

*St Philomena's and the team have gone out of their way to work with us and to minimise disruption to the curriculum wherever possible. They have shown a professional approach throughout and the quality of the work speaks for itself."*

**Mr J. Hordley, Acting Headteacher,**  
St Philomena's School

### Accommodation for Bursar

Beard undertakes occasional bespoke and one off properties and at St Marys School in Ascot, the team are midway through a 40 week project to construct a new, high specification, four bedroom house for the school bursar.

### School improvements at Clewer Green

A school hall, three new classrooms, plus toilets, kitchens and associated services has given a new lease of life to Clewer Green First School in Windsor with improvements for children and staff.



### Developing Construction Talent

Sir Michael Latham, author of the influential government report 'Constructing the Team' and the recent Chairman of CITB-Construction Skills, made time to address Beard project managers participating in an innovative leadership development programme, at the company's Guildford offices.

To meet such an industry heavy weight was a real inspiration to the 14 project managers taking part in the programme, which is designed to equip talented middle managers and emerging 'young stars' with the skills, confidence and knowledge required in today's dynamic industry. Sir Michael shared his views on the industry stressing the continuing importance of skills and training, and took questions from the Beard team.